

# Nickel & Nickel

Single Vineyard Wines



## CABERNET SAUVIGNON

### BEAR TRACK VINEYARD **NAPA VALLEY**

Bear Track Vineyard is planted in three terraced blocks on the eastern hillsides of Napa Valley, just outside of the Howell Mountain AVA. The cool climate and iron-rich, volcanic ash soils result in small, tight clusters of concentrated fruit. Ample hang time before harvest yields a Cabernet Sauvignon with intense, dark fruit flavors and integrated tannins.

### DOGLEG VINEYARD **ST. HELENA** NAPA VALLEY

Located along the historic Silverado Trail, this eastern St. Helena site provides a warm climate for early ripening, yielding a plush Cabernet Sauvignon with concentrated red fruit flavors and a finish that is melting, elegant and long.

### DECARLE VINEYARD **RUTHERFORD** NAPA VALLEY

DeCarle Vineyard is planted on the west side of Rutherford, in the dusty soils for which the area is known. This Cabernet Sauvignon offers a silky palate that complements the wine's juicy berry and black cherry flavors and finishes with a subtle minerality.

### QUARRY VINEYARD **RUTHERFORD** NAPA VALLEY

Located on the slopes above the Silverado Trail on the east side of Rutherford, Nickel & Nickel sources Quarry Vineyard Cabernet from three distinct hillside blocks. The rocky loam soils are well drained and grow vines of moderate vigor.

### C.C. RANCH **RUTHERFORD** NAPA VALLEY

C.C. Ranch sits along the slope of a knoll west of the Silverado Trail. The vineyard is planted on well-drained, gravelly loam soil and the climate is ideal for the variety due to the warm summer temperatures that mature tannins and ripen fruit. Nickel & Nickel produces wine from 15 select acres of this vineyard.

### QUICKSILVER VINEYARD **RUTHERFORD** NAPA VALLEY

The Quicksilver Vineyard lies on the western side of Rutherford, in the acclaimed winegrowing area along Bella Oaks Lane. These older vines are planted on well-drained loam with wider spacing and a divided canopy, which provide great exposure to the fruit. Nickel & Nickel selects fruit from about 10 acres of this vineyard.

### BRANDING IRON VINEYARD **OAKVILLE** NAPA VALLEY

The eight-acre Branding Iron Vineyard lies in the western part of Oakville close to the base of the Mayacamas Mountains. The vineyard is comprised of well-drained clay loam, and the vines are vertically trellised to maximize sunlight and open the canopy.

### JOHN C. SULLENGER VINEYARD® **OAKVILLE** NAPA VALLEY

The home vineyard of Nickel & Nickel, Sullenger Vineyard is situated behind the winery in the heart of Oakville and is named for John C. Sullenger, who settled the farmstead in the 1880's. The vineyard's 30 acres of clay loam soil are planted exclusively to Cabernet Sauvignon, with 2 rootstocks and a few different clones which each add a unique element to the resulting wine.

### STATE RANCH **YOUNTVILLE** NAPA VALLEY

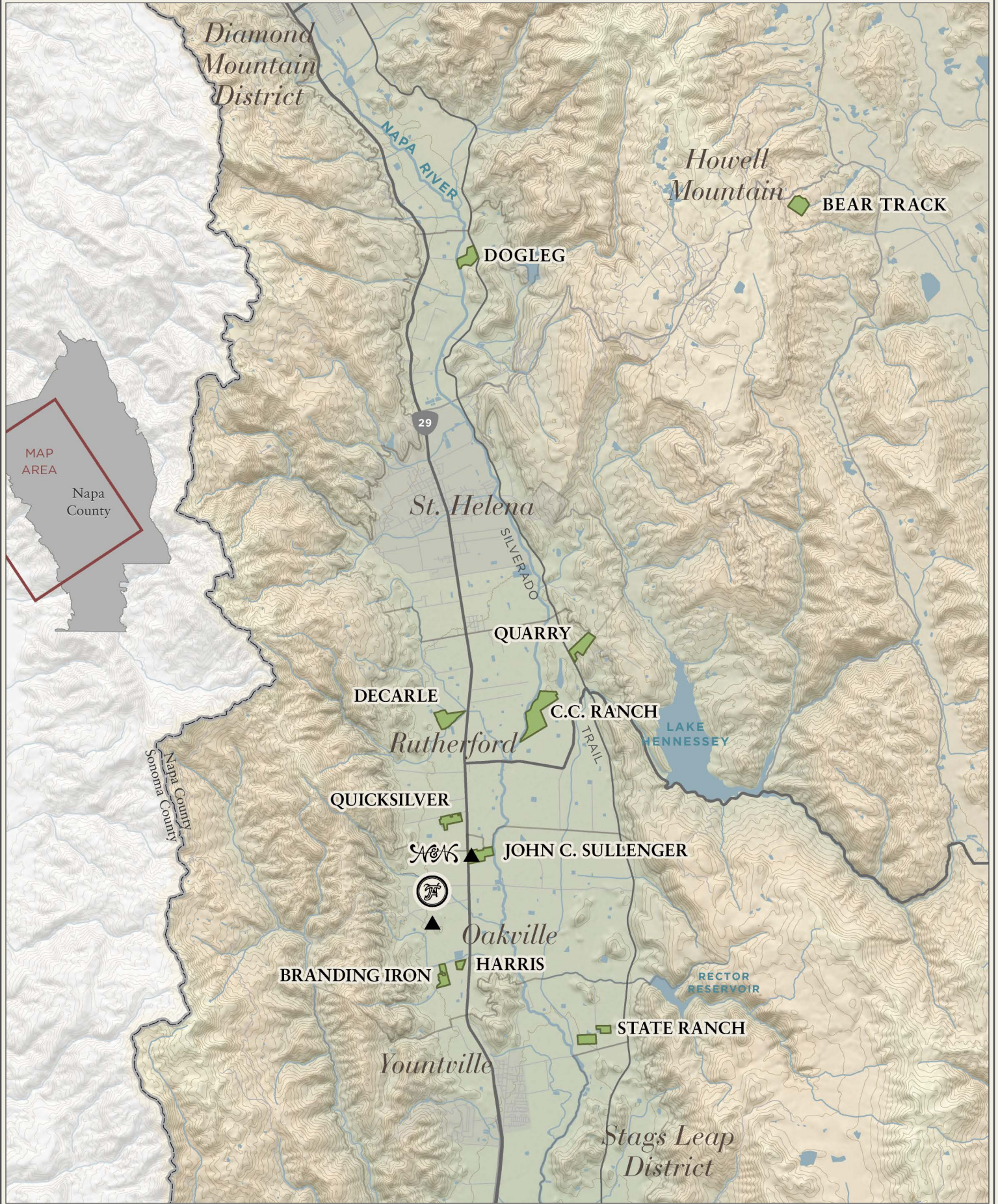
The 23-acre State Ranch is located northeast of the town of Yountville. The rocky, loam soil has excellent drainage and grows Cabernet Sauvignon vines and clusters that are moderate in size. Nickel & Nickel produces wine from fourteen-and-a-half acres of the vineyard.

### VACA VISTA VINEYARD **OAK KNOLL DISTRICT** NAPA VALLEY

Vaca Vista Vineyard sits upon the valley floor in the Oak Knoll District. The vineyard's well-drained, gravelly soils and moderate climate provide even ripening, resulting in this structured and polished Cabernet Sauvignon.

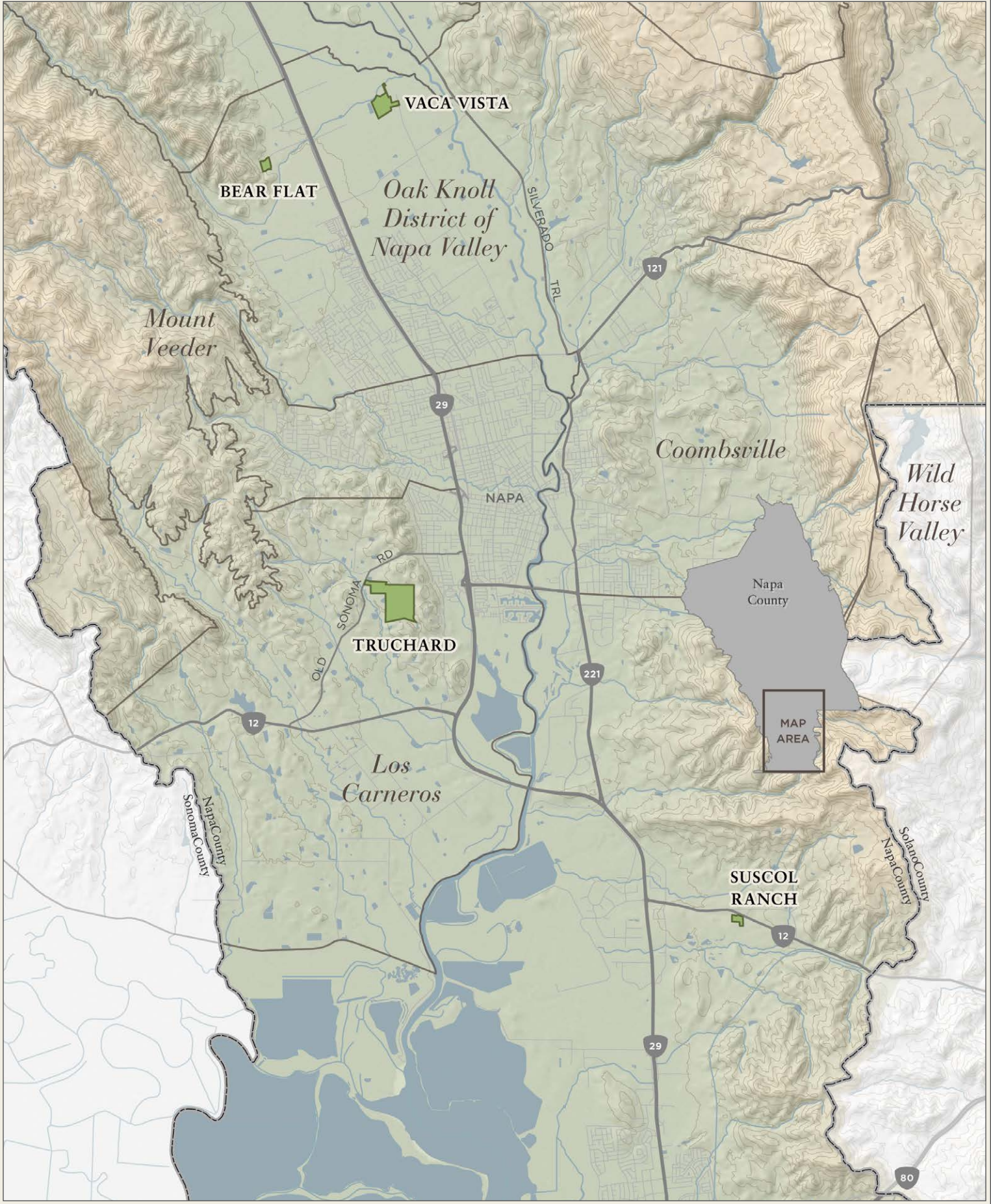


# NORTHERN NAPA VALLEY





# SOUTHERN NAPA VALLEY







Nickel & Nickel  
Bear Trach  
Vineyard  
2018  
Napa Valley  
Cabernet Sauvignon

Nickel & Nickel  
Dogleg  
Vineyard  
2018  
Napa Valley  
St. Helena  
Cabernet Sauvignon

Nickel & Nickel  
DeCarle  
Vineyard  
2018  
Napa Valley  
Rutherford  
Cabernet Sauvignon

Nickel & Nickel  
Quarry  
Vineyard  
2018  
Napa Valley  
Rutherford  
Cabernet Sauvignon

Nickel & Nickel  
C.C. Ranch  
2018  
Napa Valley  
Rutherford  
Cabernet Sauvignon

Nickel & Nickel  
Quicksilver  
Vineyard  
2018  
Napa Valley  
Rutherford  
Cabernet Sauvignon

Nickel & Nickel  
Branding  
Iron  
2018  
Napa Valley  
Oakville  
Cabernet Sauvignon

Nickel & Nickel  
John C. Sullenger  
Vineyard  
2018  
Napa Valley  
Oakville  
Cabernet Sauvignon

Nickel & Nickel  
State  
Ranch  
2018  
Napa Valley  
Yountville  
Cabernet Sauvignon

Nickel & Nickel  
Vaca Vista  
Vineyard  
2018  
Oak Knoll District  
of Napa Valley  
Cabernet Sauvignon

PRODUCED AND BOTTLED BY NICKEL & NICKEL  
STYER, OAKVILLE, CA 94562 ALC. 14.9% BY VOL.

PRODUCED AND BOTTLED BY NICKEL & NICKEL  
STYER, OAKVILLE, CA 94562 ALC. 14.9% BY VOL.

PRODUCED AND BOTTLED BY NICKEL & NICKEL  
STYER, OAKVILLE, CA 94562 ALC. 14.9% BY VOL.

PRODUCED AND BOTTLED BY NICKEL & NICKEL  
STYER, OAKVILLE, CA 94562 ALC. 14.9% BY VOL.

PRODUCED AND BOTTLED BY NICKEL & NICKEL  
STYER, OAKVILLE, CA 94562 ALC. 14.9% BY VOL.

PRODUCED AND BOTTLED BY NICKEL & NICKEL  
STYER, OAKVILLE, CA 94562 ALC. 14.9% BY VOL.

PRODUCED AND BOTTLED BY NICKEL & NICKEL  
STYER, OAKVILLE, CA 94562 ALC. 14.9% BY VOL.

PRODUCED AND BOTTLED BY NICKEL & NICKEL  
STYER, OAKVILLE, CA 94562 ALC. 14.9% BY VOL.

PRODUCED AND BOTTLED BY NICKEL & NICKEL  
STYER, OAKVILLE, CA 94562 ALC. 14.9% BY VOL.

PRODUCED AND BOTTLED BY NICKEL & NICKEL  
STYER, OAKVILLE, CA 94562 ALC. 14.9% BY VOL.